



Richard Pike Associates
Building, Design and Planning Specialists



RPA...

is an energetic, reliable and passionate building, design and planning specialist which is well established and well resourced to serve a thriving client base.

Since its formation over 35 years ago, RPA has steadily expanded to design increasingly complex building projects in the leisure, commercial, listed, refurbishment, industrial, residential and housing association sectors.

The practice has carefully developed its relationships with clients who are primarily based in the eastern region and London and the practice has won a number of design awards for its work.

RPA offers a full range of services from the beginning of a project through to completion and is committed to providing a professional and efficient service at all stages.



Our vision

To deliver high quality, innovative building and design solutions with outstanding customer service in a supportive work environment to exceed our clients' expectations - making us the logical choice for our partners

Our mission

We will continuously strive to exceed our clients' expectations by partnering with them to implement effective solutions that will help them achieve their business objectives.

To fulfil our mission, we will rely on our people, follow our values and utilise innovation and technology.

Our values

We value our clients, our employees and our environment. We achieve organisational excellence through the following core values:

Principles:

Being honest and open. Demonstrating a caring attitude. Showing integrity. Being respectful.

Quality:

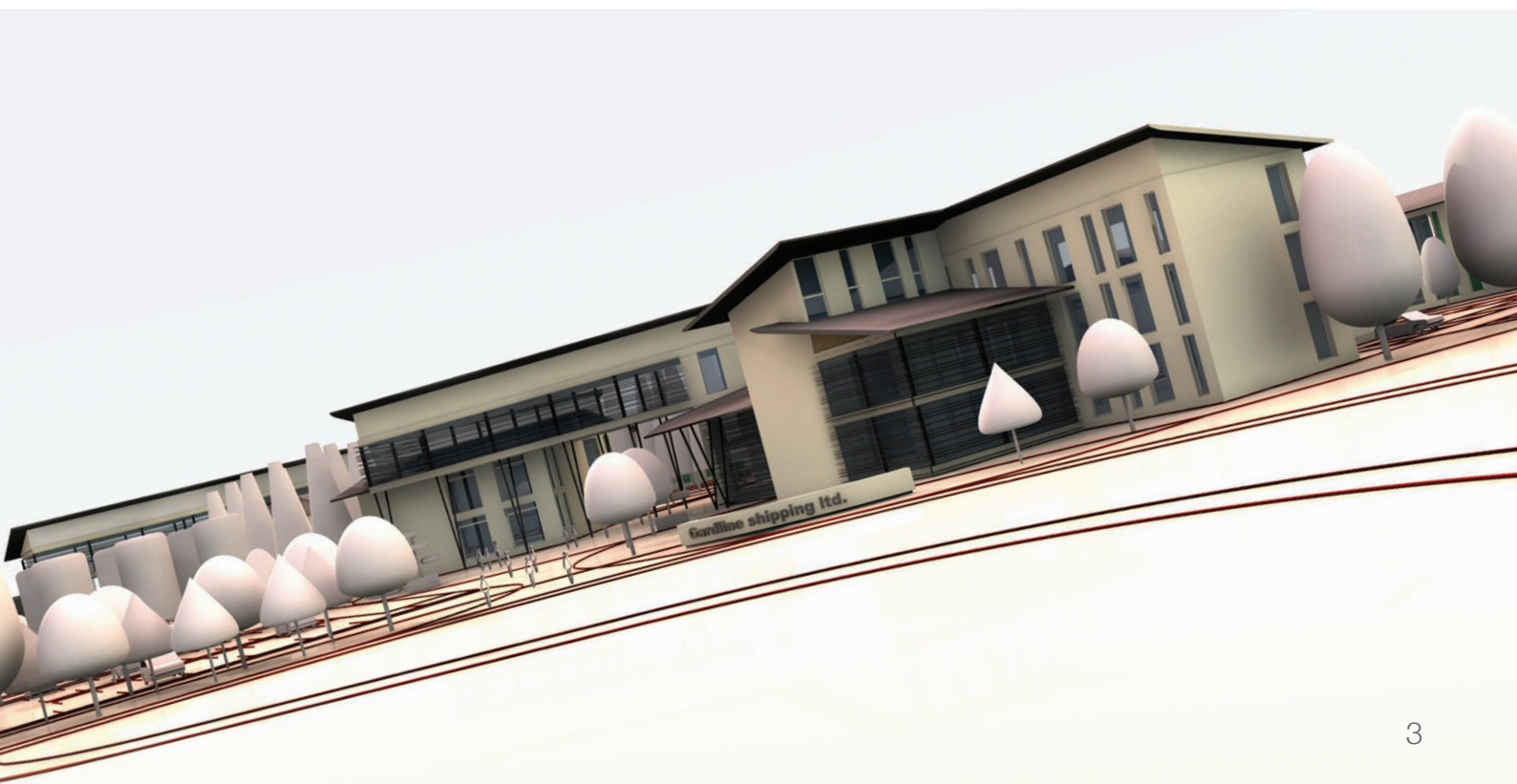
Continually improving. Developing the best skills. Exceeding goals and objectives. Communicating effectively.

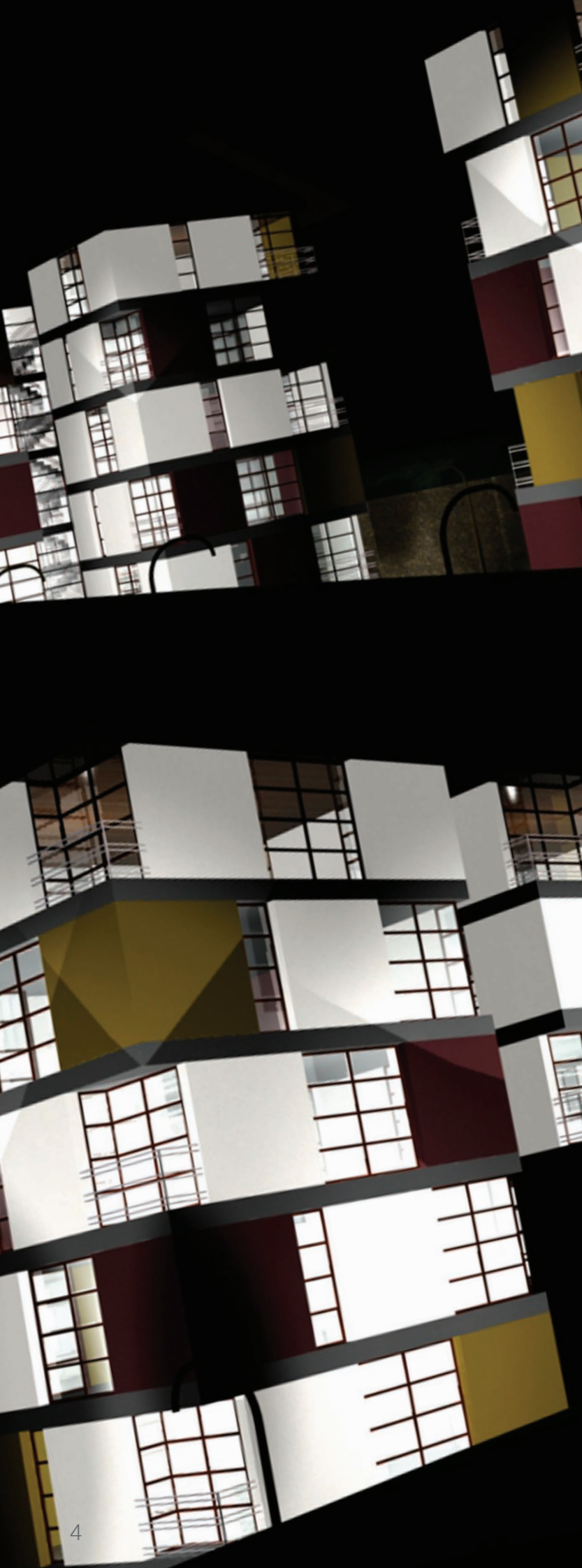
Responsibility:

Doing what we say we will do. Ensuring safety. Striving for environmental sustainability. Building solid partnerships with our clients.

Achievement:

Demonstrating competence. Recognising the success of our team members. Working as a team and sharing a desire to succeed. Supporting a positive attitude.





Aims

Our strategic aims are the tools we use to organise and focus our activities to achieve our strategic vision and mission. We will define specific objectives and targets relating to each strategic aim.

People

To recruit and retain high-quality and appropriately-qualified staff in all areas of the company, to provide an effective framework for staff development, to develop good management and leadership skills and to reward good performance.

Excellence

To provide an increasingly strong infrastructure to support RPA's activities and enhance its reputation by utilising best practice, improving technology and providing sound cost-effective design solutions.

Partnering

To develop new projects consistent with the mission and to continue the company's positive and open approach to partnership and collaborative work.

Financial

To secure, through robust financial management, a sustainable financial performance within margins to invest in the company's development, driving profitability and increasing its value.

Environmental

To promote sustainable building and design methods ensuring they can continue to sustain value and quality and contribute to the community's well being.

Innovation

To ensure a high-quality service through a commitment to excellence and innovation, an up-to-date and stimulating environment, expanding areas of strong demand, identifying new opportunities and keeping the programme portfolio under regular review.



Our approach

RPA understands that in a constantly evolving world it is important to provide a flexible service which can be exactly modelled to the prescribed requirements of our clients.

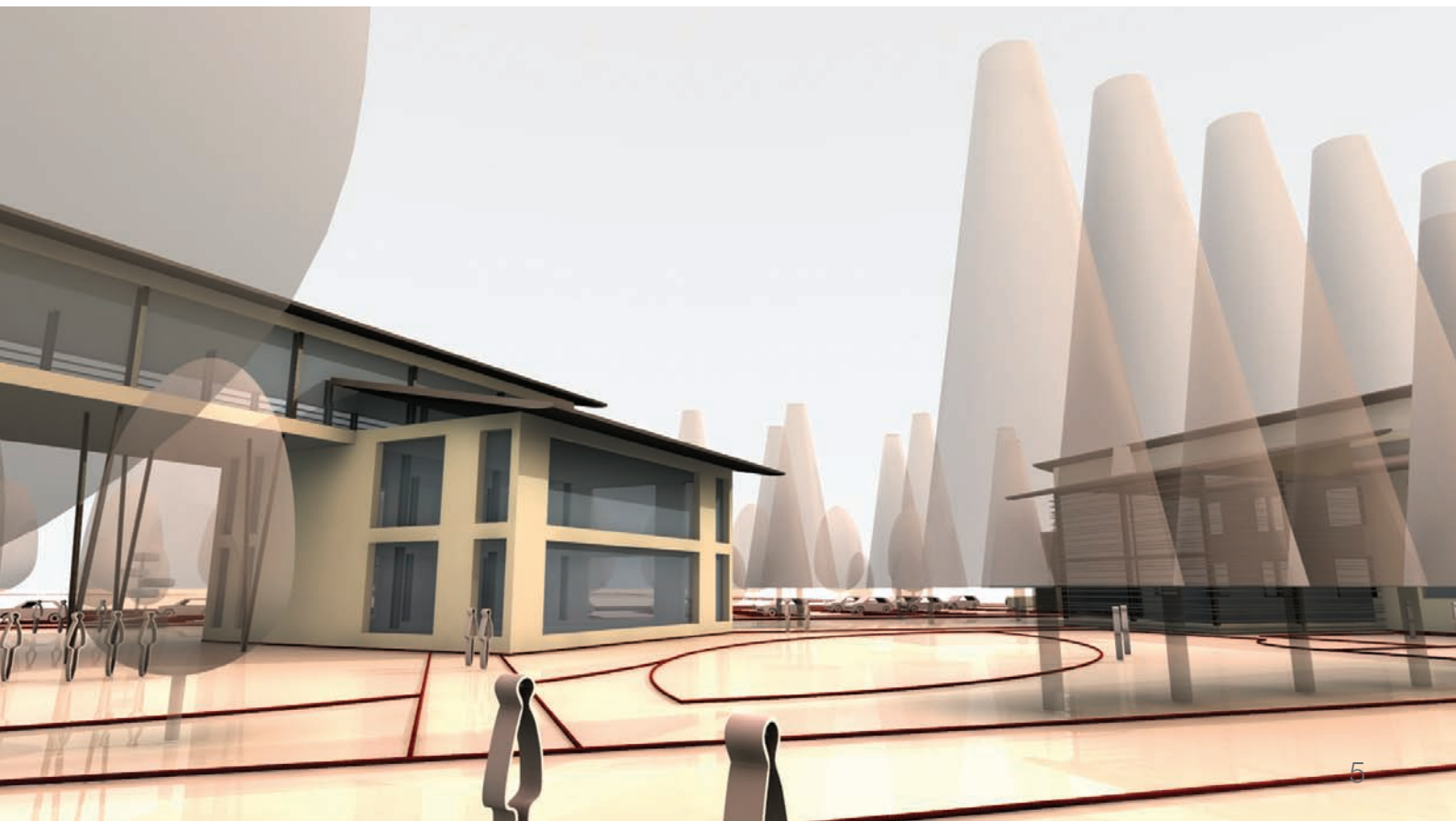
We continually seek to deliver professional and well-managed projects which are responsive to their environment, procured on time, and within budget. To achieve this we believe it essential to work in partnership with our clients and other disciplines.

We also believe our passion for quality in design, creativity and flexibility adds value for our clients.

The starting point for every project at RPA is always to consider the brief alongside the building's cultural, social and historical context. Putting enormous effort into understanding the nature of the site and the needs of the building's users, it is only from here that the design, materials and methods will be determined. Working as a team, in close collaboration with clients, consultants, contractors, and all other stakeholders the result is an original and fitting architecture.

RPA is dedicated to designing buildings that acknowledge their impact on the environment. The practice strives to produce environmentally sustainable design, using leading edge technology; adding value through imaginative, innovative and positive design solutions.

In this way, the team has successfully delivered affordable housing and private residence projects, commercial spaces and buildings for mixed, cultural and leisure uses.



A vertical teal-colored background image showing the surface of water with ripples and reflections, occupying the left half of the page.

Our people

RPA is led and shaped by its people. The success of the practice depends on the expertise and professionalism of each staff member. This philosophy underlines our approach to staff development.

Through an annual appraisal system we identify individual development needs and provide a personal technical and professional training plan, helping each person to fulfil their potential. This ensures skill levels are strategically aligned with our client and business needs.

We work with integrity and discipline in an open and relaxed atmosphere, having a flexible team structure that enables team members to be selected specifically to suit the project in hand. Through staff training and the cross-fertilisation of ideas across the practice, an innovative, challenging and fulfilling working environment has been created.



Richard Pike
ACIOB MCIAT MAPS
Managing Director

Principal and founding member of RPA, Richard brings beneficial leadership to RPA. Richard has over forty year's experience in the practice of architecture and has completed over 300 projects in affordable housing, commercial office and leisure buildings, government facilities and renovation projects.

Richard's passion lies in integrating architecture and the environment to develop unique, sustainable projects. He strives to use his expertise in both fields to ensure his projects are sustainable and cost effective.

Dick Smith
BSc (Econ) MA
Director

Dick is a project based Financial and Management Consultant. He is an experienced director of private limited companies and brings a wealth of expertise in project appraisal and business development modelling and implementation.

Peter Roy
BA (Hons)
Director

Peter areas of expertise include business growth and planning, relationship management, modernisation and new market identification. He prides himself on building solid and honest relationships with his clients.

Lorna Blackmore
MCIM
Director

Lorna has substantial experience of strategy development, branding, internal and external communication, project and event management, CRM, PR and HR. She has a strong track record of developing and strengthening marketing activity and partnership development.

Dick Wingate
MRTPI
Director of Planning
Chartered Town Planner

Dick has worked in planning for over 40 years primarily for local authorities.

He runs his own planning consultancy, and has worked on commercial, farming, and residential schemes for private clients, as well as acting as consultant to local authorities.

Lee Marsh
BA (Hons) ACIAT
Associate Director

Lee has over five years of industry experience gaining hands-on experience of planning and building regulation drawings in a technical environment, producing full working drawing packages for many social housing schemes and an increasing number of private developments.

In his role at RPA, Lee continues to develop his interest in sustainable and energy efficient projects, whilst contributing to the growth and development of the practice.

Jane Hunting
BA (Hons)
Associate Director

Jane joined the practice in 2008 previously working as a planning assistant for a local architect practice and district council. Jane has gained experience in all sectors including residential, education and commercial, working on projects ranging from large strategic level master planning through to smaller scale feasibility studies in both urban and rural locations.

Our team

Chris Yardley - Arboriculturalist
David Johns - Technologist
Dick Smith - Director
Dick Wingate - Director of Planning
Evert Amador - Architect
Gary Groom - Technologist
Ian Malton - Architect
James Pike - IT
Jane Hunting - Associate Planning
Jo Franklin - Production Assistant
Lee Marsh - Associate Technologist
Lisa Stubbs - Landscape Designer
Lorna Blackmore - Director
Mark Ashurst - Architect
Paul Abbot - Architect
Peter Roy - Director
Rebecca Cook - Technologist
Richard Pike - Managing Director
Rob McVicar - Architect
Sam Pike - Photography
Simon Wodwood - Technician

Our social responsibility statements

RPA is fully committed to the goal of operating all of our services, legally, ethically, and responsibly. We recognise our responsibility to contribute positively to the community that supports us and we adopt and practice the following in line with this philosophy.

Best practice and technology

RPA's structured training and professional development programmes enable our staff to achieve membership of relevant professional institutions. Our investment in continuing professional development means that staff are at the forefront of current best practice and technology.

Sustainability

RPA is dedicated to designing buildings that acknowledge their impact on the environment. The practice strives to produce environmentally sustainable design, using leading edge technology; adding value through imaginative, innovative and positive design solutions.

Risk management

RPA is committed to managing risk to meet its financial, environmental and design responsibilities, and to support good business decision-making.

RPA's implementation of a risk management framework demonstrates that risks have been assessed and are being managed in accordance with stakeholder expectations.

RPA's executive team are responsible for promoting risk management strategies and practices within the company and for ensuring that these strategies are communicated to and practiced by all staff.

Health and safety

RPA strives to ensure that all activities and work will be carried out in a safe manner and we will ensure the health, safety and welfare of our employees and others who may be affected by our activities.

Diversity

RPA fosters an environment committed to and supportive of diversity, the free exchange of ideas and equal opportunities. The company learns and develops from both the experience of the team and each other.



4 Netherconesford 93-95 King Street
Norwich NR1 1PW

Telephone: 01603 611 323

Email: info@richardpike.co.uk

Website: www.richardpike.co.uk


Richard Pike Associates
Building, Design and Planning Specialists